

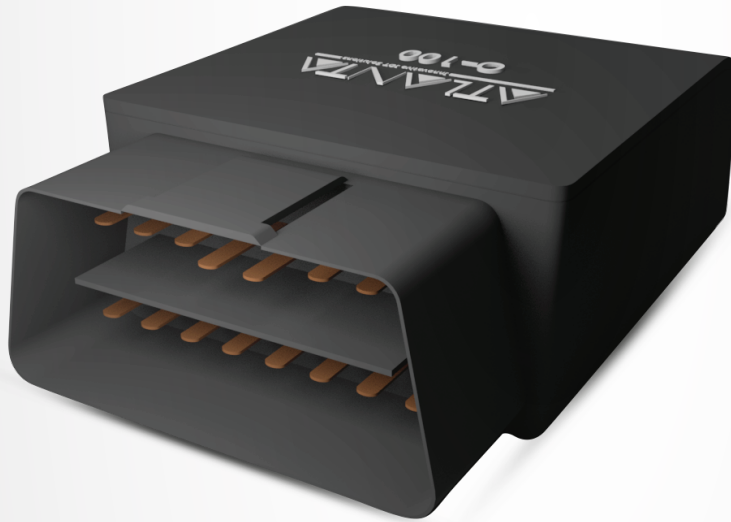
0-100 PROTOCOL



CAN Protocol



GSM



Battery



GNSS



ATLANTA SYSTEMS PVT. LTD.

+91 9990333888 / +91-11-49039700(100 Lines) enquiry@atlantasy.com www.atlantasy.com

M-135, 2nd Floor, Connaught Place, New Delhi - 110001

Telematics | IOT and Industrial IOT | Electric Vehicle Solutions | Smart Parking Solutions | Smart City Solutions

SL#	Version	Prepared by	Date
1	V3.1	SOUMYA RANJAN PANDA	12/01/2018

Introduction

O-100 will communicate with server in TCPIP protocol. The format of message from O-100 to server would be as follows.

Protocol

PACKETTYPE, SIGNATURE, IMEI, TIME(GMT), DATE, GPSVALIDITY, LATITUDE, LATITUDE DIRECTION, LONGITUDE, LONGITUDE DIRECTION, SPEED KNOT, ANGLE OF MOTION, ODOMETER, INTERNAL BATTERY VOLTAGE, SIGNAL STRENGTH, MOBILE COUNTRY CODE, MOBILE NETWORK CODE, LOCATION AREA CODE, CELL ID, #I1I2I3I4, END OF RESPONSE,CHECKSUM

- Live data

L,ATL,862631034245448,073950,090817,A,2838.0105,N,07713.3491,E,0,143,3.14,4.0,21,404,4,88,ad7b,#0010ATL#

- History data

H,ATL,862631034245448,074050,090817,A,2838.0105,N,07713.3491,E,0,143,3.14,4.0,21,404,4,88,ad7b,#0010ATL#

Protocol Description

Sl.No.	Value	Description
1	L/H	Live/Memory
2	ATL	Signature
3	862631034226166	IMEI
4	063736	Time
5	080717	Date
6	A/V	valid/invalid
7	2837.6926	Latitude
8	N/S	North/South
9	07714.0415	Longitude
10	E/W	East/West
11	0	Speed knot
12	17	Angle of motion
13	351.16	Odometer
14	4.2	Battery
15	16	Signal Strength
16	404	Mobile country code
17	4	Mobile Network code
18	88	Location area code
19	4ca5	Cell id
20	#	FIXED
21	0010	I/O status, Refer Table-2 for details
22	ATL	Signature
23	CHECKSUM	CHECKSUM VALUE

I/o Status

Sl.No.	Feilds	Description
1	I1	RESERVED
2	I2	RESERVED
3	I3	RESERVED
4	I4	MAINPOWER(1=CONNECTED, 0=REMOVED)

Checksum Calculating Method :-

```
voidchksum_gprs(char * ptr)
{
unsignedint i = 0;
charchksum=0;
for(i=0;i<1000 && *ptr != 0x00;i++)
{
chksum ^= *ptr++;
}
return(chksum);
}
```

NOTE: FOR ALL DATA PACKETS, AT LAST YOU WOULD GET

CHECKSUM OF ALL BYTES IN PACKET BETWEEN STARTING CHARACTER AND END CHARACTER (INCLUDING BOTH STARTING CHARACTER AND END CHARACTER).